

DEIB Calendar

2025 - 2026



For more information contact hannah@thebelongingeffect.co.uk

thebelongingeffect.co.uk



September

2025



SEPTEMBER IS:

Blood Cancer Awareness Month
 Childhood Cancer Awareness Month
 Sickle Cell Awareness Month
 Urology Awareness Month
 World Alzheimer's Month
 Alopecia Awareness Month

| Monday | Tuesday | Wednesday | Thursday | Friday | Saturday | Sunday |
|--|--|---------------------------------------|------------------------|---|--|--|
| 1 | 2 | 3 | 4 | 5 Mawlid al-Nabi International Day of Charity | 6 Anant Chaturdashi Colour Blind Awareness Day / National Read a Book Day | 7 |
| 8 Feast of The Birth of The Virgin Mary | 9 | 10 World Suicide Prevention Day | 11 | 12 | 13 | 14 Feast of The Cross |
| Sexual Health Awareness Week | | | | | | |
| 15 World Afro Day International Day of Democracy | 16 | 17 | 18 | 19 | 20 | 21 Feast of St. Matthew |
| Rheumatoid Arthritis Awareness Week / Male Cancer Awareness Week / UK National Inclusion Week / Professional Care Workers Week | | | | | | |
| 22 Mabon Autumn Equinox | 23 Rosh Hashanah Bi Visibility Day / International Day of Sign Languages | 24 Rosh Hashanah | 25 Fast of Gedaliah | 26 World Contraception Day / European Day of Languages | 27 Meskel | 28 International Right to Know Day |
| Migraine Awareness Week / Organ Donation Week | | | | | | |
| 29 Feast of St. Michael and All Angels World Heart Day | 30 | | | | | |

October

2025



OCTOBER IS:

ADHD Awareness Month
 Black History Month
 Breast Cancer Awareness Month
 Down Syndrome Awareness Month
 Global Diversity Awareness Month
 Lupus Awareness Month
 Menopause Awareness Month

| Monday | Tuesday | Wednesday | Thursday | Friday | Saturday | Sunday |
|--|--|--|--|---|---|---|
| | | 1 Yom Kippur International Day of Older Persons | 2 Yom Kippur / Dussehra / Feast of the Guardian Angels International Day of Non-Violence | 3 World Smile Day | 4 Feast of St. Francis of Assisi | 5 World Teachers' Day |
| 6 Sukkot World Cerebral Palsy Day | 7 Sukkot | 8 Sukkot / Birthday of Guru Ram Das Sahib Ji World Dyslexia Awareness Day | 9 Sukkot World Sight Day | 10 Sukkot World Homeless Day / World Mental Health Day | 11 Sukkot International Day of the Girl Child / National Coming Out Day | 12 Sukkot |
| Dyslexia Awareness Week / International Week of Happiness at Work / National Work Life Week | | | | | | |
| 13 Sukkot / Shemini Atzeret | 14 Shemini Atzeret / Simchat Torah | 15 Simchat Torah Global Wave of Light / Pregnancy & Infant Loss Remembrance Day / Int. Pronouns Day | 16 World Food Day / World Values Day | 17 International Day for the Eradication of Poverty / Show Racism the Red Card Day / Dev. Language Disorder Day | 18 Feast of St. Luke Anti-slavery Day / Menopause Day / | 19 |
| Baby Loss Week / Cycle to School Week | | | | | | |
| 20 Installation of the Guru Granth Sahib / Diwali World Osteoporosis Day | 21 Bandi Chhor Divas | 22 Birth of the Báb International Stammering/Stuttering Awareness Day | 23 | 24 United Nations Day | 25 Chhath Puja | 26 Chhath Puja Intersex Awareness Day |
| National Adoption Week | | | | | | |
| 27 Chhath Puja National Mentoring Day | 28 Chhath Puja / Feast of Saints Simon and Jude | 29 World Stroke Day | 30 | 31 All Hallows' Eve / Reformation Day | | |

November

2025



NOVEMBER IS:

Chronic Obstructive Pulmonary
 Disease Awareness Month
 Islamophobia Awareness Month
 Lung Cancer Awareness Month
 Mouth Cancer Action Month
 Movember Men's Health Awareness Month
 Pancreatic Cancer Awareness Month
 National Diabetes Month

| Monday | Tuesday | Wednesday | Thursday | Friday | Saturday | Sunday |
|---|---|--|--|--|--|---|
| | | | | | 1 Feast of all the Saints / Samhain | 2 All Souls' Day / Coronation Anniv. of Emperor Haile Selassie |
| 3 | 4 | 5 Birthday of Guru Nanak Dev Ji National Stress Awareness Day | 6 | 7 | 8 Intersex Day of Solidarity | 9 Feast of the Dedication of the Lateran Basilica Remembrance Sunday |
| 10 | 11 Armistice Day | 12 | 13 World Kindness Day | 14 World Diabetes Day / Disability History Month Begins | 15 Nativity Fast Begins | 16 International Day for Tolerance |
| 17 International Students' Day | 18 | 19 International Men's Day | 20 Transgender Day of Remembrance / World Children's Day | 21 Presentation of the Theotokos International Stand Up to Bullying Day | 22 | 23 Feast of Christ the King |
| Transgender Awareness Week | | | | | | |
| 24 Guru Tegh Bahadur Martyrdom | 25 Day of the Covenant International Day for the Elimination of Violence Against Women | 26 | 27 Ascension of Abdu'l-Bahá | 28 | 29 | 30 St. Andrew's Day / Advent Sunday |

December

2025



DECEMBER IS:

AIDS Awareness Month

Decembeard

Universal Month for Human Rights

Disability History Month

| Monday | Tuesday | Wednesday | Thursday | Friday | Saturday | Sunday |
|---|---|---|---|--|---|--|
| 1 Gita Jayanti World AIDS day | 2 International Day for the Abolition of Slavery | 3 International Day of Persons with Disabilities | 4 | 5 International Volunteer Day | 6 | 7 |
| 8 Feast of the Immaculate Conception / Rohatsu (Bodhi Day) | 9 | 10 Human Rights Day | 11 | 12 International Universal Health Coverage Day | 13 | 14 Hanukkah |
| 15 Hanukkah | 16 Hanukkah / Dhanu Sankranti | 17 Hanukkah | 18 Hanukkah International Migrants' Day | 19 Hanukkah | 20 Hanukkah International Human Solidarity Day | 21 Hanukkah / Yule begins Winter Solstice |
| 22 Hanukkah | 23 | 24 Christmas Eve | 25 Christmas Day Feast of the Nativity of Our Lord | 26 Boxing Day / Feast of Saint Stephen / Zarathost Diso | 27 | 28 Holy Innocents' Day / Feast of the Holy Family |
| 29 | 30 | 31 Hogmanay / New Year's Eve / Watch Night | | | | |

January

2026



JANUARY IS:

Alcohol Change UK's Dry January
 Celebration of Life Month
 Cervical Health Awareness Month
 Thyroid Awareness Month

| Monday | Tuesday | Wednesday | Thursday | Friday | Saturday | Sunday |
|--|---|---|---|-----------------------------------|--|--|
| | | | 1 Gantan-sai (New Year) / Solemnity of Mary, Mother of God | 2 | 3 Mahayana New Year | 4 World Braille Day |
| 5 Twelfth Night | 6 Epiphany | 7 Epiphany / Feast of the Nativity of Our Lord | 8 Ethnicity Pay Gap Day | 9 | 10 | 11 Baptism of the Lord Jesus |
| 12 Seijin No Hi | 13 Lohri - Maghi | 14 Pongal / Makar Sankranti / Old New Year | 15 Pongal | 16 Pongal / Lailat al-Miraj | 17 Pongal | 18 World Religion Day |
| 19 Timkat Martin Luther King Day | 20 Birthday of Guru Gobind Singh Sahib Ji | 21 | 22 | 23 Vasant Panchami | 24 International Day of Education | 25 Conversion of St. Paul / Zacchaeus Sunday |
| Week of Prayer for Christian Unity / Cervical Cancer Prevention Week | | | | | | |
| 26 | 27 Holocaust Memorial Day | 28 International Data Protection Day | 29 | 30 | 31 Birthday of Guru Har Rai Sahib Ji | |

February

2026



FEBRUARY IS:

LGBT+ History Month
National Heart Month
Raynaud's and Scleroderma
Awareness Month

| Monday | Tuesday | Wednesday | Thursday | Friday | Saturday | Sunday |
|--|---|---|--|--|-------------------------------------|--|
| | | | | | | 1 Imbolc / Triodion Begins / Thaipusam / Tu B'Shvat World Hijab Day |
| 2 Imbolc / Candlemas / Tu B'Shvat | 3 Setsubun-sai | 4 World Cancer Day | 5 Time to Talk Day | 6 International Day to Zero Tolerance for FGM | 7 | 8 Sunday of the Prodigal Son |
| UK Race Equality Week / World Interfaith Harmony Week | | | | | | |
| 9 | 10 Safer Internet Day | 11 Int. Day of Women and Girls in Science / World Day of the Sick | 12 Red Hand Day for Child Soldiers | 13 | 14 Valentine's Day | 15 Feast of the Transfiguration/ Maha Shivratri /Nirvana Day/ Meatfare Sunday International Childhood Cancer Day |
| Children's Mental Health Week | | | | | | |
| 16 Maha Shivratri | 17 Chinese New Year (Lunar New Year) / Ramadan Begins / Shrove Tuesday World Human Spirit Day | 18 Ash Wednesday | 19 | 20 World Day of Social Justice | 21 | 22 Feast of the Chair of St. Peter / Cheese fare Sunday |
| 23 Great Lent Begins | 24 | 25 Intercalary Days | 26 Intercalary Days | 27 Intercalary Days International Stand Up to Bullying Day | 28 Intercalary days | |
| Eating Disorder Awareness Week | | | | | | |

March

2026



MARCH IS:

Ovarian Cancer Awareness Month
Prostate Cancer Awareness Month
Women's History Month

UK Marie Curie Cancer Care's
Great Daffodil Appeal Month

| Monday | Tuesday | Wednesday | Thursday | Friday | Saturday | Sunday |
|--|---|--|---|---|--|---|
| 30 World Bipolar Day | 31 Mahavir Janma Kalyanak International Trans Day of Visibility | | | | | 1 Intercalary Days / Feast of Orthodoxy / St. David's Day Disability Day of Mourning / Self-Injury Awareness Day / Int. Wheelchair Day / Zero Discrimination Day |
| 2 Purim / 19 Day Fast Begins | 3 Purim / Māgha Pūjā / Holika Dahan World Hearing Day | 4 Hola Mohalla / Holi | 5 Hola Mohalla | 6 Hola Mohalla | 7 | 8 International Women's Day |
| 9 | 10 | 11 | 12 | 13 | 14 Nanakshahi (New Year) | 15 Mother's Day / International Day to Combat Islamophobia |
| Empathy Week | | | | | | |
| 16 Laylat Al-Qadr Young Carers' Action Day | 17 St. Patrick's Day | 18 Global Recycling Day | 19 Navatri / Eid al-Fitr / Feast of St. Joseph / Ugadi | 20 Navatri / Eid al-Fitr / Spring Equinox (Ostara) International Day of Happiness | 21 Navatri / Nowruz Single Parents' Day / Int. day for the Elimination of Racial Discrimination / World Down Syndrome Day | 22 Navatri |
| Neurodiversity Celebration Week | | | | | | |
| 23 Navatri | 24 Navatri World Tuberculosis (TB) Day | 25 Navatri / Annun. of the Virgin Mary / Annun. to the Theotokos Int. Day of Remembrance of the Victims of Slavery and the Transatlantic Slave Trade | 26 Navatri / Rama Navami | 27 Navatri | 28 | 29 |

April

2026



APRIL IS:

World Autism Acceptance Month
Bowel Cancer Awareness Month
Parkinson's Awareness Month
Stress Awareness Month

| Monday | Tuesday | Wednesday | Thursday | Friday | Saturday | Sunday |
|---|--|---|---|--|---|---|
| | | 1 Passover | 2 Passover / Hanuman Jayanti / Maundy Thursday World Autism Awareness Day | 3 Passover / Hanuman Jayanti / Good Friday | 4 Passover / Lazarus Saturday | 5 Passover / Easter Sunday |
| 6 Passover International Asexuality Day | 7 Passover World Health Day | 8 Passover International Romani Day | 9 Passover | 10 | 11 | 12 Pascha |
| 13 Songkran / Theravada New Year / Birthday of Guru Khalsa Panth Sahib Ji / Yom HaShoah | 14 Songkran / Birth of the Khalsa Planth (Vaisakhi) / Tamil New Year / Yom HaShoah | 15 Songkran | 16 | 17 | 18 Birthday of Guru Tegh Bahadur Sahib Ji | 19 Akshaya Tiritiya |
| 20 Birthday of Guru Arjan Dev Ji | 21 First day of Ridvan / Yom HaZikaron / Yom Ha'Atzmaut | 22 Yom HaZikaron / Yom Ha'Atzmaut Earth Day / Stephen Lawrence Day | 23 St. George's Day | 24 | 25 Feast of St. Mark the Evangelist World Malaria Day | 26 Lesbian Visibility Day |
| 27 | 28 Birthday of Guru Argad Dev Ji World Day for Health and Safety at Work | 29 Ninth Day of Ridván | 30 | | | |

Multiple Sclerosis Awareness Week

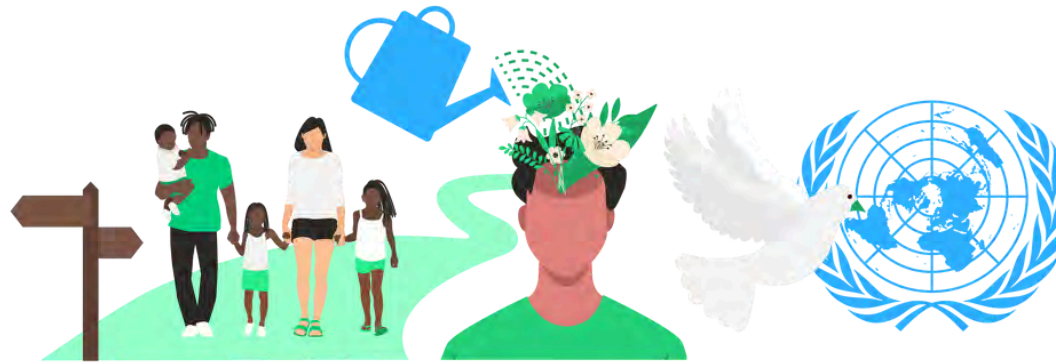
For more information contact hannah@thebelongingeffect.co.uk

thebelongingeffect.co.uk



May

2026



MAY IS:

Stroke Awareness Month
Coeliac Awareness Month
UK National Walking Month

| Monday | Tuesday | Wednesday | Thursday | Friday | Saturday | Sunday |
|--|---|---|---|--|--|---|
| | | | | 1 Beltane / Vesak | 2 Twelfth Day of Ridván | 3 Feast of Saints Philip and James International Family Equality Day / World Press Freedom Day |
| 4 Lag BaOmer | 5 Lag BaOmer | 6 | 7 | 8 | 9 | 10 National Children's Day UK |
| Deaf Awareness Week | | | | | | |
| 11 Birthday of Guru Amar Das Sahib Ji | 12 International Nurses Day | 13 National Day of Staff Networks | 14 Yom Yerushalayim / Feast of St. Matthias / Feast of the Ascension | 15 Yom Yerushalayim International Day of Families | 16 | 17 International Day Against Homophobia, Transphobia and Biphobia |
| Black Inclusion Week / Mental Health Awareness Week | | | | | | |
| 18 | 19 | 20 | 21 Shavuot Global Accessibility Awareness Day / World Day for Cultural Diversity for Dialogue and Development | 22 Shavuot International Day for Biological Diversity | 23 Shavuot / Declaration of the Báb | 24 Hajj / Buddha Day / Pentecost Pansexual Visibility Day |
| Dementia Action Awareness Week / Learning at Work Week | | | | | | |
| 25 Hajj / Waqf al Arafa | 26 Hajj / Waqf al Arafa / Eid al-Adha | 27 Hajj / Eid al-Adha | 28 Hajj / Eid al-Adha | 29 Hajj / Eid al-Adha / Ascension of Bahá'u'llah International Day of United Nations Peacekeepers | 30 Eid al-Adha / | 31 Trinity Sunday / Visitation of the Blessed Virgin Mary World No Tobacco Day |

June

2026



JUNE IS:

Gypsy, Roma and Traveller History Month

LGBTQ+ Pride Month

Motor Neurone Disease Awareness Month

Stillbirth and Neonatal Death Awareness Month

| Monday | Tuesday | Wednesday | Thursday | Friday | Saturday | Sunday |
|---|--|---|---|---|---------------------------|--|
| 1 | 2 | 3 | 4 The Feast of Corpus Christi International Day of Innocent Children Victims of Aggression | 5 World Environment Day | 6 | 7 |
| Volunteers Week | | | | | | |
| 8 | 9 | 10 | 11 | 12 Birthday of Guru Hargobind Sahib Ji / Feast of the Sacred Heart of Jesus World Day Against Child Labour | 13 Global Wellness Day | 14 World Blood Donor Day / Race Unity Day |
| 15 World Elder Abuse Awareness Day | 16 Muharram (Islamic New Year) / Martyrdom of Guru Arjan Dev | 17 World Day to Combat Desertification and Drought | 18 Autistic Pride Day | 19 | 20 World Refugee Day | 21 Summer Solstice / Litha Father's Day / World Humanist Day / Global MND Awareness Day |
| Men's Health Week / Refugee Week / Learning Disability Week | | | | | | |
| 22 UK Windrush Day | 23 | 24 Nativity of St. John the Baptist | 25 Ashura | 26 Ashura | 27 | 28 |
| School Diversity Week | | | | | | |
| 29 Feast of Saints Peter and Paul | 30 | | | | | |

July

2026



JULY IS:

Disability Pride Month
Group B Strep Awareness Month
UV Safety Awareness Month
International Women with Alopecia Month

| Monday | Tuesday | Wednesday | Thursday | Friday | Saturday | Sunday |
|--------|---|---|--|--|---|--|
| | | 1 | 2 | 3 Feast of the St. Thomas the Apostle | 4 | 5 |
| 6 | 7 | 8 | 9 | 10 Martyrdom of the Báb | 11 World Population Day | 12 |
| 13 | 14 International Non- Binary People's Day | 15 St. Vladimir the Great Day World Youth Skills Day | 16 International Drag Day | 17 World Day for International Justice | 18 Nelson Mandela International Day | 19 Birthday of Guru Har Krishan Sahib Ji |
| 20 | 21 | 22 Tish'a B'av / Feast of St. Mary Magdalene | 23 Tish'a B'av / Birthday of Emperor Haile Selassie | 24 Pioneer Day | 25 Feast Day of St. James the Great | 26 |
| 27 | 28 The 15th of Av (Tu B'Av) World Hepatitis Day | 29 The 15th of Av (Tu B'Av) / Asalha Puja (Dharma Day) | 30 International Day of Friendship / World Day Against Trafficking Persons | 31 | | |

August

2026



AUGUST IS:

Psoriasis Awareness Month

| Monday | Tuesday | Wednesday | Thursday | Friday | Saturday | Sunday |
|--|---------|-------------------------------|---|---|--|--|
| 31 | | | | | 1 Fast in Honour of the Holy Mother of the Lord Jesus / Lammas / Lughnasadh International Alopecia Day | 2 |
| 3 | 4 | 5 | 6 Feast of Transfiguration of the Lord | 7 | 8 | 9 International Day of the World's Indigenous People |
| 10 Feast of St. Lawrence | 11 | 12 International Youth Day | 13 Obon | 14 Obon Partition Horrors Remembrance Day | 15 Obon / Assumption of Mary / Dormition of the Theotokos | 16 |
| 17 | 18 | 19 World Humanitarian Day | 20 | 21 | 22 International Day Commemorating the Victims of Acts of Violence Based on Religion or Belief | 23 International Day for the Remembrance of the Slave Trade and its Abolition |
| 24 Feast of St. Bartholomew the Apostle | 25 | 26 | 27 | 28 Raksha Bandhan | 29 Beheading of St. John the Baptist / Birthday of Sri Guru Granth Sahib Ji | 30 Grief Awareness day |

BE Resources

Our DEIB Toolkits

| | | | | | | | |
|--|---|---|---|---|---|---|---|
|  |  |  |  |  |  |  |  |
| <u>Coaching and Mentoring</u> | <u>Courageous Conversations</u> | <u>Cultural Intelligence</u> | <u>Culturally Responsive Pedagogy</u> | <u>DEIB Leaders</u> | <u>Disability Awareness</u> | <u>Diversity in the Curriculum</u> | <u>EAL and Multilingualism</u> |
|  |  |  |  |  |  |  |  |
| <u>Flexible Working</u> | <u>Gender Equality</u> | <u>Global Citizenship</u> | <u>Global Majority Educators</u> | <u>Governors' DEIB Toolkit</u> | <u>Gypsy Roma Traveller</u> | <u>HR Leaders' DEIB Toolkit</u> | <u>Inclusive Allyship</u> |
|  |  |  |  |  |  |  |  |
| <u>Inclusive Classrooms</u> | <u>Inclusive Language</u> | <u>Inclusive Leadership</u> | <u>Inclusive Recruitment</u> | <u>Inclusive RSHE</u> | <u>Inclusive Workplaces</u> | <u>Intersectionality</u> | <u>ITTE DEIB Toolkit</u> |
|  |  |  |  |  |  |  |  |
| <u>LGBTQ+ Inclusion</u> | <u>Masculinity</u> | <u>Menopause Awareness</u> | <u>Mental Health and Wellbeing</u> | <u>Microaggressions</u> | <u>Neurodiversity</u> | <u>Parents and Carers</u> | <u>Pregnancy and Maternity</u> |
|  |  |  |  |  |  | | |
| <u>Psychological Safety</u> | <u>Religion & Beliefs</u> | <u>Sexual Harrassment</u> | <u>Transgender Rights</u> | <u>Trauma -informed</u> | <u>Unconscious Bias</u> | | |