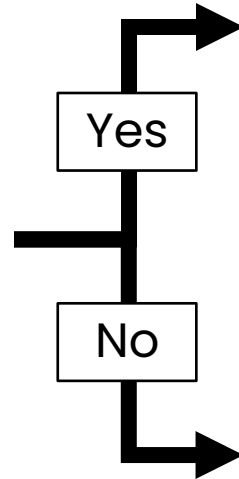


Funding processes for pupils with EHC Plans in mainstream schools for 2024/2025

Pupils in mainstream schools, in mainstream provision (inc. hubs)



Was the EHC plan issued before Sept 2024?



Yes

No

The current interim model applies:

- 1) Initial block funding direct to schools
- 2) Targeted funding from localities
- 3) Exceptional needs funding from the LA

Schools will receive information about a pupil's band from the LA. Funding will be issued centrally from the LA each term.