

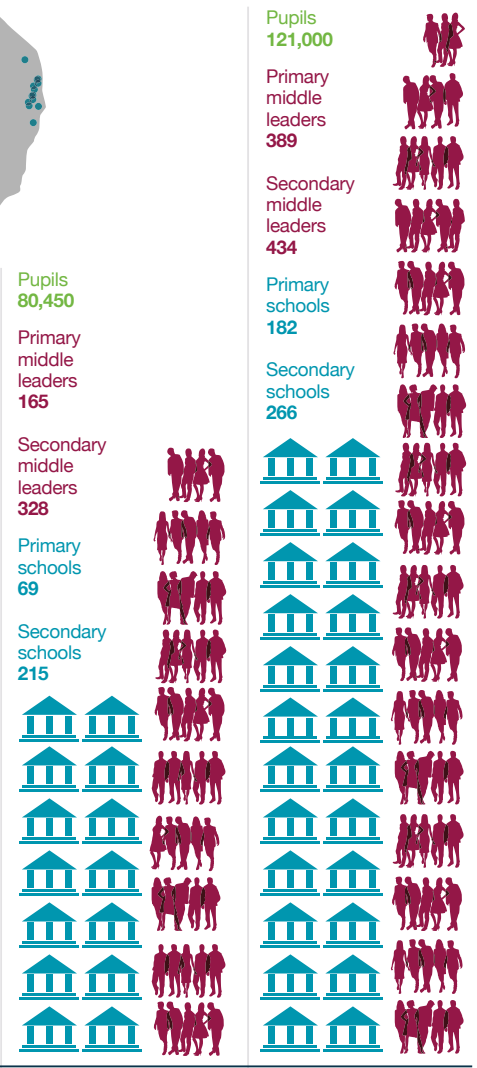
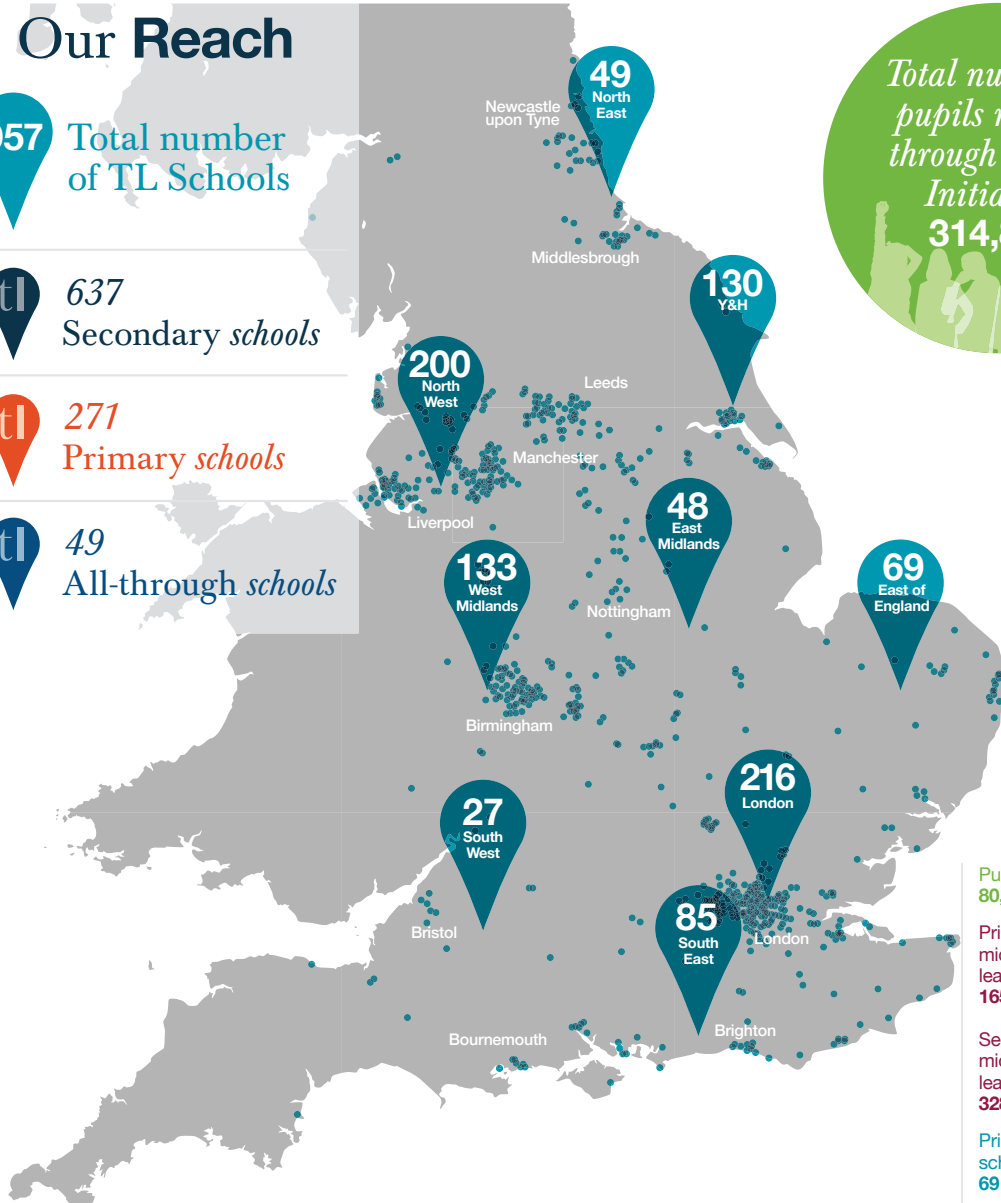
Teaching Leaders is a charity that addresses educational disadvantage by growing a movement of outstanding middle leaders in schools in challenging contexts across England. We do this by offering four leadership development programmes to our schools: TL Fellows, TL Primary, TL Schools and TL Aspire. All our programmes develop middle leaders and aspiring middle leaders, enabling them to transform pupil outcomes in their area of responsibility.

## Our Reach

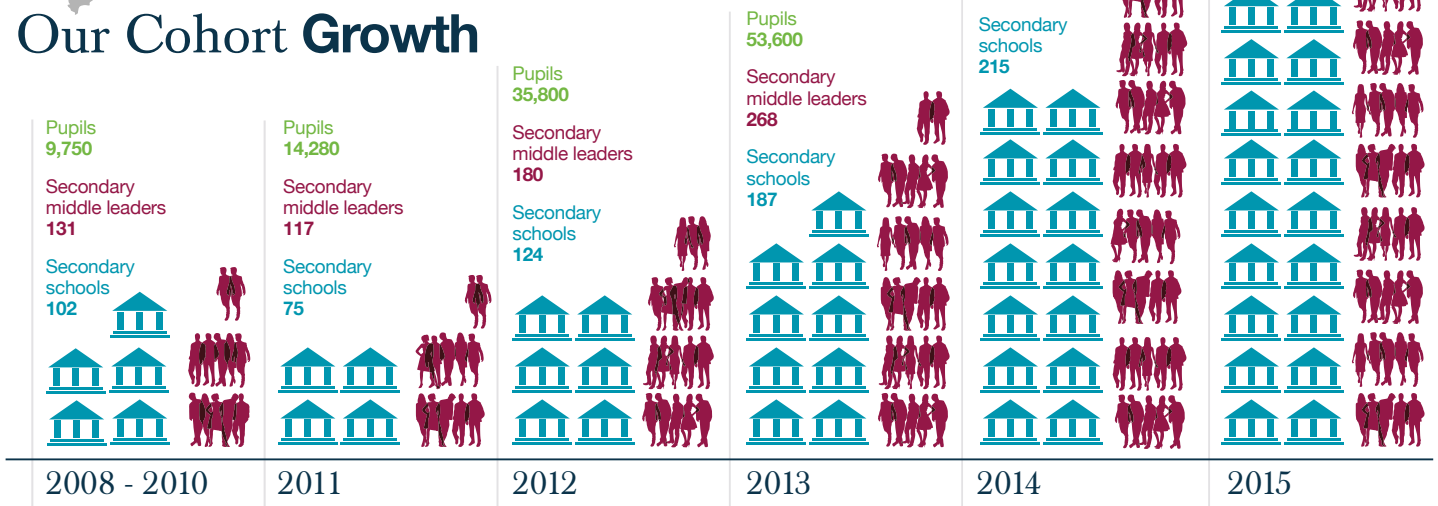
- 957** Total number of TL Schools
- 637** Secondary schools
- 271** Primary schools
- 49** All-through schools



Total number of current Participants and Alumni



## Our Cohort Growth

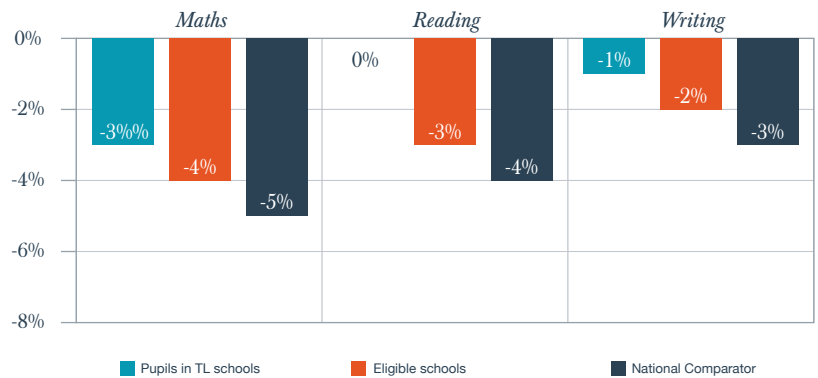


The graphs below show the impact of the first Teaching Leaders Primary Associates in 2015, after one year on the programme. The national average figures are for all state-funded, mainstream schools. Eligible schools are those who met our 2014 criteria of ‘schools in challenging contexts’, but have not yet worked with TL. TL Primary Associates work with 34% more pupils with low prior attainment than the national average. Their progress and attainment is in line with the national figures, but exceeds both eligible schools and the national figures when looking at pupils with low prior attainment only. TL Primary Associates also work with 84% more disadvantaged pupils than the national average.

## Narrowing the gap in pupil progress

*Progress of pupils in TL schools is in line with the national average. However TL Primary Associates work with 84% more disadvantaged pupils than the national average and yet have a smaller gap than eligible schools and all schools nationally, with no gap in reading.*

Gap in expected progress\* between all pupils and disadvantaged pupils



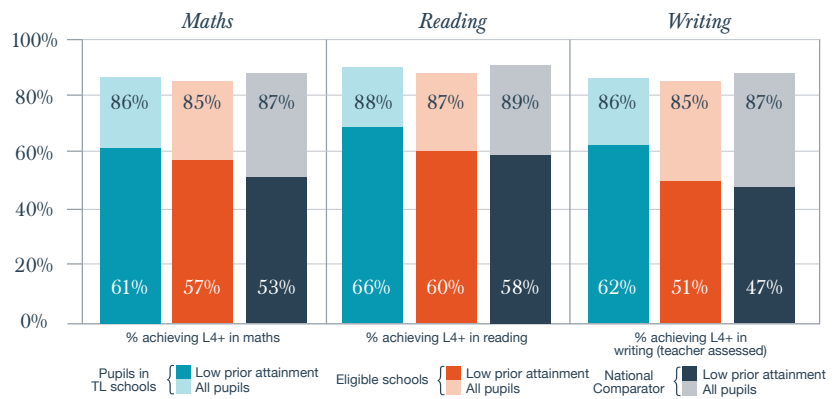
	Maths	Reading	Writing (teacher assessed)
Number of pupils included	1143	979	979

\*Two or more levels of progress

## Raising the attainment of low prior attainers

*TL Primary Associates work with 34% more pupils with low prior attainment than the national average. Progress for pupils in TL schools is in line with national average but those with low prior attainment outperform others in all schools by 8% in maths and reading, and 15% in writing.*

Attainment of all pupils and those with low prior attainment

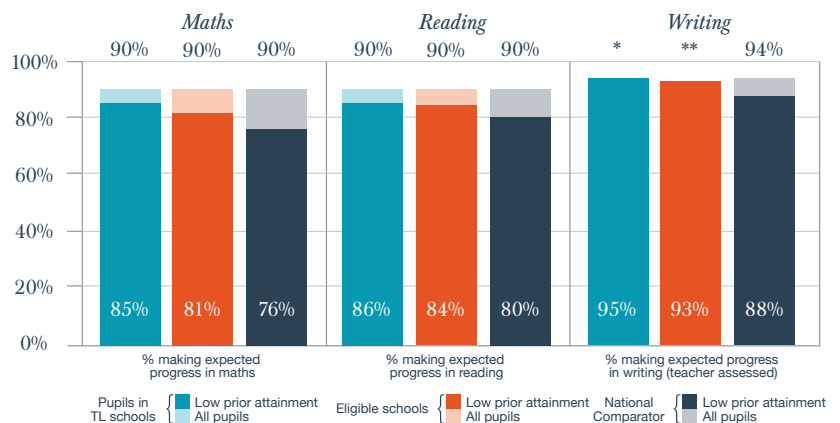


	Maths	Reading	Writing (teacher assessed)
Number of pupils included			
All pupils	1202	1033	1033
Pupils with low KS1 attainment	1083	882	882

## Accelerating the progress of low attainers

*Attainment for pupils in TL schools is in line with national average, but those with low prior attainment outperform others in all schools by 9% in maths, 6% in reading, and 7% in writing.*

Progress of all pupils and those with low prior attainment



	Maths	Reading	Writing (teacher assessed)
Number of pupils included			
All pupils	1202	1033	1033
Pupils with low KS1 attainment	1083	882	882

\*For TL schools, 94% of 'all pupils' made expected progress in writing

\*\* For Eligible schools, 91% of 'all pupils' made expected progress in writing